



DEA No. RA0571996  
FL License # CMTL-0003  
CLIA No. 10D1094068

# Certificate of Analysis

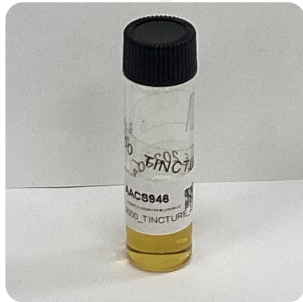
## Compliance Test

**BIOMASS OIL SEPARATION SOLUTIONS LLC**  
9251 N 2ND ST  
ROSCOE, IL 61073

Batch # 9000\_TINCTURE\_20220421 Test Reg State: Florida  
Batch Date: 2022-04-21  
Extracted From: Hemp

Order # BIO220421-010001  
Order Date: 2022-04-21  
Sample # AAC946

Sampling Date: 2022-04-25 Initial Gross Weight: 11.488 g  
Lab Batch Date: 2022-04-25  
Completion Date: 2022-04-28



Potency Tested

Product Image

### Potency 21 (LCUV)

Specimen Weight: 111.930 mg

Tested (LCUV)

Analyte	Dilution (1:n)	LOD (%)	LOQ (%)	Result (mg/g)	(%)
CBD	1000.000	0.000054	0.0015	306.0000	30.6000
CBG	100.000	0.000248	0.0015	25.8600	2.5860
CBT	100.000	0.0002	0.0015	15.2100	1.5210
CBDV	10.000	0.000065	0.0015	6.0510	0.6051
CBC	10.000	0.000018	0.0015	4.1640	0.4164
Delta-9 THC	10.000	0.000013	0.0015	2.8710	0.2871
CBN	10.000	0.000014	0.0015	2.1250	0.2125
CBL	10.000	0.000035	0.0015	0.5210	0.0521
CBDVA	10.000	0.000014	0.0015	0.2000	0.0200
CBGA	10.000	0.000008	0.0015	0.1790	0.0179
THCVA	10.000	0.000047	0.0015	0.1610	0.0161
THCV	10.000	0.000007	0.0015		<LOQ
THCA	10.000	0.000032	0.0015		<LOQ
Exo-THC	10.000	0.00023	0.0015		<LOQ
Delta-9 THC-O Acetate	10.000	0.000077	0.0003		<LOQ
CBCA	10.000	0.000107	0.0015		<LOQ
Delta-8 THCV	10.000	0.000004	0.0015		<LOQ
Delta-8 THC-O Acetate	10.000	0.000027	0.0003		<LOQ
Delta-8 THC	10.000	0.000026	0.0015		<LOQ
CBDA	10.000	0.000001	0.0015		<LOQ
CBNA	10.000	0.000095	0.0015		<LOQ

### Potency Summary

Total THC 0.287%	Total CBD 30.600%
Total CBG 2.602%	Total CBN 0.213%
Other Cannabinoids 2.626%	Total Cannabinoids 36.327%

Xueli Gao  
Ph.D., DABT  
Lab Toxicologist

Aixia Sun  
D.H.Sc., M.Sc., B.Sc., MT (AAB)  
Lab Director/Principal Scientist



Definitions and Abbreviations used in this report: \*Total CBD = CBD + (CBD-A \* 0.877), \*Total CBDV = CBDV + (CBDVA \* 0.87), \*Total THC = THCA-A \* 0.877 + Delta 9 THC, \*Total THCV = THCV + (THCVA \* 0.87), \*CBG Total = (CBGA \* 0.877) + CBG, \*CBN Total = (CBNA \* 0.877) + CBN, \*Total CBC = CBC + (CBCA \* 0.877), \*Total THC-O-Acetate = Delta 8 THC-O-Acetate + Delta 9 THC-O-Acetate, \*Other Cannabinoids Total = Total Cannabinoids - All the listed cannabinoids on the summary section, \*Total Detected Cannabinoids = Delta6a10a-THC + Delta8-THC + Total CBN + CBT + Delta8-THCV + Total CBG + Total CBD + Total THCV + CBL + Total THC + Total CBC + Total CBDV + Delta10-THC + Total THC-O-Acetate, \*Analyte Details above show the Dry Weight Concentrations unless specified as 12% moisture concentration. (mg/ml) = Milligrams per Milliliter, LOQ = Limit of Quantitation, LOD = Limit of Detection, Dilution = Dilution Factor (ppb) = Parts per Billion, (%) = Percent, (cfu/g) = Colony Forming Unit per Gram (cfu/g) = Colony Forming Unit per Gram, LOD = Limit of Detection, (µg/g) = Microgram per Gram (ppm) = Parts per Million, (ppm) = (µg/g), (aw) = aw (area ratio) = Area Ratio, (mg/Kg) = Milligram per Kilogram, \*Measurement of Uncertainty = +/- 10%



This report shall not be reproduced, without written approval, from ACS Laboratory. The results of this report relate only to the material or product analyzed. Test results are confidential unless explicitly waived otherwise. Accredited by a third-party accrediting body as a competent testing laboratory pursuant to ISO/IEC 17025 of the International Organization for Standardization.